



FREE

1.0

CE | CPEU
AVAILABLE*

Exploring the Clinical and Economic Impacts of Nutrition Care for Patients with Cancer

LEARNING OBJECTIVES:

- Review the prevalence of malnutrition and the association between malnutrition and cancer outcomes.
- Discuss health economics and outcomes research supporting nutrition interventions.
- Describe the consequences of inadequate nutrition in patients with cancer.

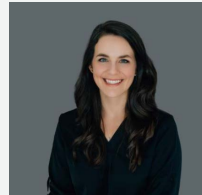
SPEAKERS:



CARLEY RUSCH

PHD, RDN, LDN

Medical Science Liaison
Medical Affairs & Research
Abbott's Nutrition Division



JILLIAN HYTTENHOVE

MA, RD, CSOWM, LD, CHES

Medical Affairs & External
Engagement Liaison
Medical Affairs & Research
Abbott's Nutrition Division

MEETING INFORMATION:

Available Dates:

Wednesday, February 26, 2025 | 3 PM EST

Wednesday, June 11, 2025 | 12 PM EST

Virtual Registration Link



Visit anhi.org to learn more about our
nutrition science education and resources

*Abbott Nutrition Health Institute is an approved provider of continuing nursing education by the California Board of Registered Nursing Provider #CEP 11213. This educational activity has been prior-approved by the Commission on Dietetic Registration (CDR). CDR credentialed practitioners will receive the specified continuing professional education units (CPEUs) for completion of this program/material.

anhi.org

©2025 Abbott

202521344/ January 2025 LITHO IN USA

