

FREE  
3.0

CE | CPEU  
AVAILABLE\*

## Nutrition-Focused Physical Exam Webinar Series

### COURSES:

- **Course 1:** Adult Malnutrition Screening and Assessment
- **Course 2:** Extending the Nutrition-Focused Physical Exam: Assessing Clinical Signs of Micronutrient Deficiencies
- **Course 3:** Adult and Pediatric Malnutrition Screening and Assessment

In these programs, the Academy/ASPEN consensus criteria and the NFPE are reviewed as well as screening and interventions for malnutrition and micronutrient deficiencies. Course 3 is a combined program that will incorporate pediatric malnutrition screening and identification.

### MEETING DATES:

#### Course 1 Available Dates:

Tuesday, March 18, 2025 | 12 PM EST

Thursday, September 18, 2025 | 12 PM EST

#### Course 2 Available Dates:

Tuesday, April 8, 2025 | 12 PM EST

Wednesday, July 16, 2025 | 3 PM EST

Thursday, October 9, 2025 | 12 PM EST

#### Course 3 Available Date:

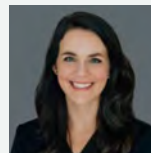
Wednesday, June 4, 2025 | 3 PM EST

### SPEAKERS:



**KATIE ROBINSON**  
PHD, MPH, RD, LD, CNSC

Manger, Medical Science Liaisons  
Abbott's Nutrition Division



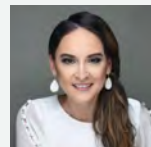
**JILLIAN HYTTEHOVE**  
MA, RD, CSOWM, LD, CHES

Medical Affairs & External  
Engagement Liaison  
Abbott's Nutrition Division



**CARLEY RUSCH**  
PHD, RDN, LDN

Medical Science Liaison  
Abbott's Nutrition Division



**ANDIE LEE GONZALEZ**  
PHD, MPH, RDN, FAND

Senior Medical Science Liaison  
Abbott's Nutrition Division

Virtual Registration Link



Visit [anhi.org](https://anhi.org) to learn more about our nutrition science education and resources

\*Abbott Nutrition Health Institute is an approved provider of continuing nursing education by the California Board of Registered Nursing Provider #CEP 11213. This educational activity has been prior-approved by the Commission on Dietetic Registration (CDR). CDR credentialed practitioners will receive the specified continuing professional education units (CPEUs) for completion of this program/material.

