

# PUMP TUBE FEEDING



There are a variety of methods for delivering tube feeding. Pump feeding moves the formula through the feeding tube and into the stomach or small intestine at a controlled rate using an electronic pump.

## PREPARING YOUR FEEDINGS

Follow these steps to prepare your tube feeding:

1. Wash your hands with soap and warm water
2. Clean your work surfaces
3. Gather equipment:
  - Formula
  - Pump feeding bag, pump or pump set
  - 30-mL to 60-mL syringe
  - Clean cloth
  - Tap or bottled water
4. Label container with time and date

## CORRECTLY POSITION YOUR BODY BEFORE GETTING STARTED

- DO NOT lie flat during your feeding
- Keep your head raised at 30 degrees or more while administering your tube feeding
- Wait one hour after your feeding before you lie down



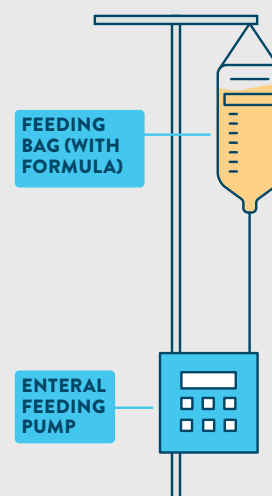
## DURING YOUR PUMP FEEDING

1. Fill the pump feeding bag with the prescribed amount of formula, close lid securely, then hang the bag on a hook, IV pole, or place into a tube feeding backpack
2. Load the feeding set into the pump by following pump manufacturer instructions
3. Prime the feeding set, which removes air from the line, by following the manufacturer instructions
4. Connect the feeding set to the feeding tube
5. Refer to your pump user manual for complete pump programming information
6. Turn on the pump and set the flow rate

### Note:

- Tube feeding pumps for home use are portable and can be placed in compatible backpacks for going out and about
- Ask your healthcare professional about care of the feeding set between feedings.

### PUMP FEEDING

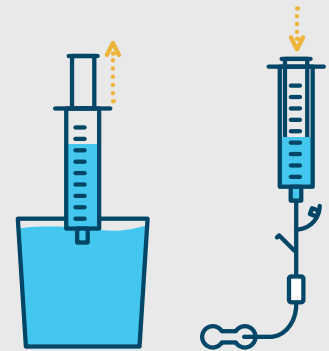


## AFTER YOUR TUBE FEEDING

Flush your feeding tube after each feeding, after and between each medication, or as directed by your healthcare professional. This step is important to keep the tube clean inside and to prevent clogging.

Here is how to do it:

1. Wash your hands with soap and warm water
2. Place the tip of the syringe into a cup of water and pull back on the plunger until there is 30-mL of water in the syringe (or the amount of water that your healthcare provider has prescribed for flushing the tube)
3. Attach the syringe to the feeding tube, unclamp the tube (if clamp is present), and slowly push the water into the feeding tube
4. Repeat until the desired amount of water is flushed through the tube
5. Remove the syringe from the feeding tube after flushing and close the port on the tube
6. Close the cap on the feeding tube until the next feeding



FLUSHING THE FEEDING TUBE WITH WATER

### Note:



- Ask your healthcare provider about care of the container and feeding set between feedings
- Cover any unused formula, write the date on it, and store it in the refrigerator



- Throw away any open, unused reconstituted formula or blenderized formula after 24 hours
- Throw away any open, unused ready-to-use formula that has been stored in the refrigerator after 48 hours

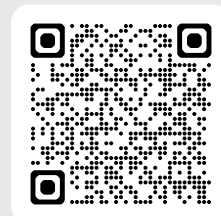


Extra water can be given through the feeding tube as needed. If you are on a fluid restricted diet, your healthcare provider will provide recommendations for your daily fluid intake. Use the barrel of the syringe as a funnel and then pour water into the syringe.



*The above information has been reviewed and approved by the American Society for Parenteral and Enteral Nutrition.*

Visit [anhi.org](https://anhi.org) for more resources on tube feeding



anhi.org | ©2024 Abbott  
202419966 / November 2024 LITHO IN USA

