



FREE

1.0

RN CE
RD CPEU

Overlooked: Addressing Malnutrition in People with Overweight and Obesity

LEARNING OBJECTIVES:

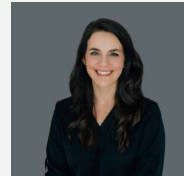
- Review the burden of malnutrition in patients with overweight and obesity and its impact on patient outcomes.
- Define sarcopenic obesity and identify factors that contribute to the development of sarcopenia in adults with overweight and obesity.
- Describe how health care providers can support patients with overweight and obesity and concurrent malnutrition.

SPEAKERS:



CARLEY RUSCH
PHD, RDN, LDN

Medical Science Liaison
Medical Affairs & Research
Abbott's Nutrition Division



JILLIAN HYTTENHOVE
MA, RD, CSOWM, LD, CHES

Medical Science Liaison
Medical Affairs & Research
Abbott's Nutrition Division



KIRK W. KERR
PHD

Senior Manager, Health Economist
Medical Affairs & Research
Abbott's Nutrition Division

MEETING INFORMATION:

Available Dates:

Tuesday, May 12, 2026 | 12 PM ET

Tuesday, September 1, 2026 | 3 PM ET

Register Today – Space is Limited!

Registration is now open, but spots are limited to the first 1,000 participants. Don't miss your chance to be part of this engaging event – secure your spot today!



Virtual
Registration Link

Visit anhi.org to learn more about our nutrition science education and resources

Abbott Nutrition Health Institute is an approved provider of continuing nursing education by the California Board of Registered Nursing Provider #CEP 11213. Overlooked: Addressing Malnutrition in People with Overweight and Obesity awards 1.0 CPEU in accordance with the Commission on Dietetic Registration's CPEU Prior Approval Program.